

36.5° C



Hikvision Temperature Screening Thermal Solutions

SAFER, FASTER, SMARTER

With advanced detectors and algorithms, Hikvision's Temperature Screening Thermal Cameras can detect elevated skin-surface temperatures in moving crowds such as passengers, commuters and shoppers, with accuracy up to $\pm 0.3^\circ\text{C}$.

Temperature Screening Solutions

- 1** Handheld Camera
+ Tripod
+ IVMS-4200 or Hik-Thermal (Mobile app)

Accuracy $\pm 0.5^\circ\text{C}$



With a Wi-Fi module, the TP21B handheld camera can connect to a PC or a smartphone to notify operators when a person with an elevated temperature passes by. It also features a built-in speaker for audio alarms.

- 2** Turret/Bullet Camera
+ Tripod/Bracket
+ IVMS-4200
+ Laptop

Accuracy $\pm 0.5^\circ\text{C}$



The turret/bullet camera features AI detection to reduce false alarms caused by other heat sources.

- 3** Turret/Bullet Camera + Blackbody Calibrator
+ Tripod/Bracket
+ IVMS-4200
+ Laptop

Accuracy $\pm 0.3^\circ\text{C}$



Compared with Solution [2], Solution [3] is enhanced with a blackbody calibrator to increase the temperature measurement accuracy from $\pm 0.5^\circ\text{C}$ to $\pm 0.3^\circ\text{C}$.
Note: Hikvision recommends installing a blackbody calibrator 1.2 meters in front of a thermal camera.

- 4** Metal Detector Door with Thermal Turret
+ IVMS-4200
+ Laptop

PRE-ORDER NOW

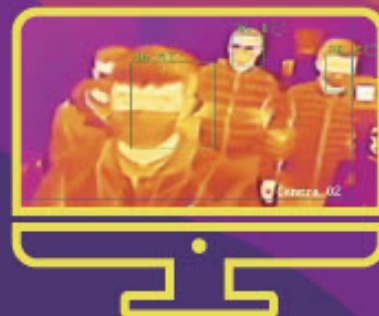
Accuracy $\pm 0.5^\circ\text{C}$
of heat of body
Accuracy $\pm 0.3^\circ\text{C}$
of blackbody



With a thermal turret (included), the temperature screening metal detector door solution offers LCD temperature indicator and real-time sound and light alarms.
Note: this door solution includes the thermal turret.
No need to order separate thermal camera.

High Efficiency
One second
to detect temperature
in a person

Increased Safety
Non-contact
measurement
to avoid physical contact



Temperature-Screening Thermal Cameras

Temperature measurement range: $30\text{--}45^\circ\text{C}$
Working temperature: $10\text{--}35^\circ\text{C}$

DS-2TD2636B/P



AI Detection

384*288 thermal resolution
15 mm thermal lens
(Recommended camera-target
distance: 4.5-9 m)
8 mm optical lens

DS-2TD2617B/PA



AI Detection

180*120 thermal resolution
3 / 8 mm thermal lens
(Recommended camera-target
distance: 0.8-1.5 m / 1.5-3.0 m)
4 / 8 mm optical lens

DS-2TD217B/PA



AI Detection

180*120 thermal resolution
3 / 8 mm thermal lens
(Recommended camera-target
distance: 0.8-1.5 m / 1.5-3.0 m)
4 / 8 mm optical lens

DS-2TP21B-6AVF/W



Wi-Fi

180*120 thermal resolution
Max 8 MP optical resolution
8 mm thermal lens
(Recommended camera-target
distance: 1.5-3.0 m)